

MLT-X840

TECHNICAL DATA SHEET

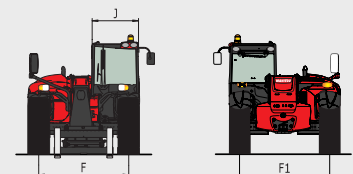
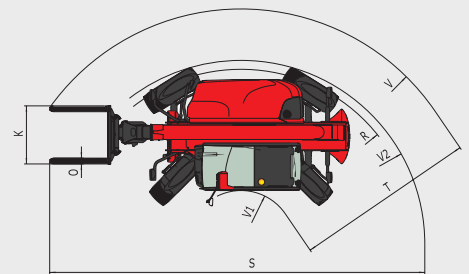
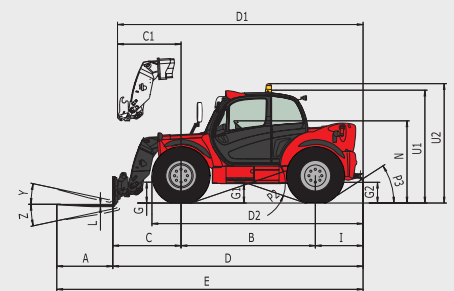
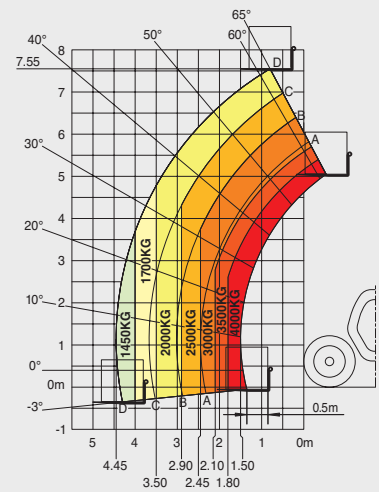


MLT-X840

		MLT-X 840-137 PS
	Lifting capacity at 500 mm from fork heels	4000 kg
	Break-out force	5222 daN
	Lifting height	7.55 m
	Time: laden/unladen (in sec)	
	Lifting	6.60/8.40
	Lowering	4.80/4.90
	Extension	6.30/6.30
	Retraction	5.20/5.20
	Crowd	3.00
Dump	2.40	
	Tyres	460/70 R24
	Forks (mm)	
	Length x width x thickness	1200 x 125 x 50
	Carriage rotation	148°
	Braking	multiple-disk brake with oil bath on front and rear axles
	JOHN DEERE engine	4045 PWX
	Cubic capacity	4 cyl./4500 cm ³
	Power at 2000 rpm (ISO 3046)	137 HP/102 kW
	Max. torque at 1500 rpm (ISO 3046)	530 Nm
	Injection	direct
	Cooling	water
	Transmission	torque converter
	Gearbox	Powershift M-Shift® with Lock-up
	Number of gears (forward/reverse)	5/3
	Max. travel speed	40 kph*
	Hydraulics	180 l/min - 290 bar
	Piston pump	electronically controlled variable cubic capacity
	Control valve	DDIC
	Capacities	
	Hydraulic oil	175 l
	Fuel	143 l
	Unladen weight (with forks)	8401 kg
	Width overall	2.39 m
	Height overall	2.40 m
	Length overall	5.37 m
	Turning radius (outer wheels)	3.98 m
	Ground clearance	0.41 m
	Drawbar pull	9400 daN
	Environmental noise (LwA)	105 dB
	Vibration to whole hand/arm	< 2.5 m/s ²

**Maximum height reach:
0.75 m**

As per standard EN 1459 annex B



A	1200	D2	4487	I	1022	P3	33°	V1	1147.5
B	2880	E	6567	J	995	R	3746	V2	3980
C	1465	F	1925	K	1245	S	8085	W	2392
C1	1362	F1	1925	L	50	T	3892.5	Y	12°
D	5367	G	447	N	1762	U1	2419	Z	136°
D1	5264	G1	415	O	125	U2	2559		
		G2	444	P2	37.5°	V	5040		

This brochure describes versions and configuration options for Manitou products which may be fitted with different equipment. The equipment described in this brochure may be standard, optional or not available depending on version. Manitou reserves the right to change the specifications shown and described at any time and without prior warning. The manufacturer is not liable for the specifications given. For more information, contact your Manitou dealer. Non-contractual document. Product descriptions may differ from actual products. List of specifications is not comprehensive. The logos and visual identity of the company are the property of Manitou and may not be used without authorisation. All rights reserved. The photos and diagrams contained in this brochure are provided for information only.

MANITOU BF SA - Limited company with board of directors - Share capital: 39,547,824 euros - 857 802 508 RCS Nantes

