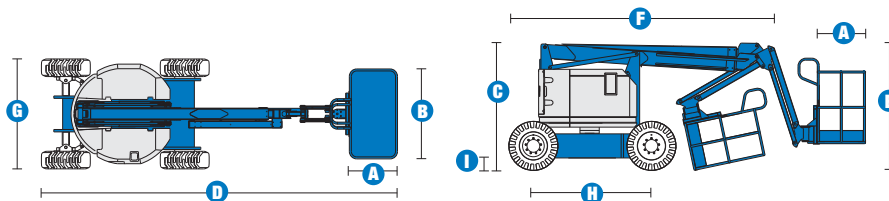
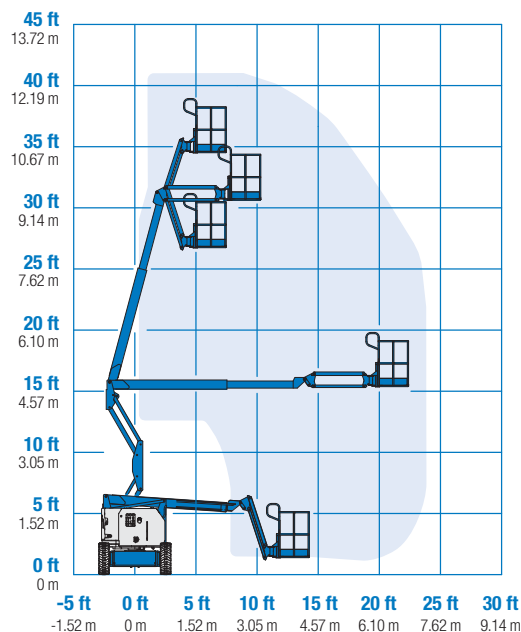


# Specifications



## RANGE OF MOTION Z™-34/22 IC



MODELS	Z™-34/22 IC 2WD		Z™-34/22 IC 4WD	
	US	Metric	US	Metric
Working height maximum*	40 ft 6 in	12.52 m	40 ft 10 in	12.62 m
Platform height maximum	34 ft 6 in	10.52 m	34 ft 10 in	10.62 m
Horizontal reach maximum	22 ft 3 in	6.78 m	22 ft 3 in	6.78 m
Up and over clearance maximum	15 ft	4.57 m	15 ft 1 in	4.6 m
<b>A</b> Platform length	2 ft 6 in	.76 m	2 ft 6 in	.76 m
<b>B</b> Platform width	4 ft 8 in	1.42 m	4 ft 8 in	1.42 m
<b>C</b> Height - stowed	6 ft 7 in	2.00 m	6 ft 9 in	2.06 m
<b>D</b> Length - stowed	18 ft 6 in	5.64 m	18 ft 7 in	5.66 m
<b>E</b> Storage height	7 ft 5 in	2.26 m	7 ft 6 in	2.29 m
<b>F</b> Storage length	13 ft 5 in	4.08 m	13 ft 6 in	4.11 m
<b>G</b> Width	5 ft 8 in	1.73 m	6 ft 1 in	1.85 m
<b>H</b> Wheelbase	6 ft 2 in	1.88 m	6 ft 2 in	1.88 m
<b>I</b> Ground clearance - center	6 in	.15 m	6.5 in	.17 m

PRODUCTIVITY				
Lift capacity	500 lbs	227 kg	500 lbs	227 kg
Platform rotation	180°		180°	
Vertical jib rotation	139°		139°	
Turntable rotation	355° non-continuous		355° non-continuous	
Turntable tailswing	zero		zero	
Drive speed - stowed	3.0 mph	4.8 km/h	3.0 mph	4.8 km/h
Drive speed - raised**	0.68 mph	1.1 km/h	0.68 mph	1.1 km/h
Gradeability - stowed***	37%		45%	
Turning radius - inside	5 ft 9 in	1.75 m	5 ft 11 in	1.80 m
Turning radius - outside	13 ft 1 in	4 m	13 ft 6 in	4.11 m
Controls	12V DC	proportional	12V DC	proportional
Tires - air-filled	9 x 14.5 in		10 x 16.5 in rough terrain	

POWER				
Power source	Kubota DF-972 3-cylinder gas/LPG 31 hp (23.1 kW) Kubota D-1105 3-cylinder diesel 26 hp (19.4 kW) Perkins 403 D11 3-cylinder diesel 26.4 hp (19.7 kW)			
Auxiliary power unit	12V DC		12V DC	
Hydraulic tank capacity	19 gal	71.9 L	19 gal	71.9 L
Fuel tank capacity	9.3 gal	35.2 L	9.3 gal	35.2 L

WEIGHT****				
	10,150 lbs	4,604 kg	10,450 lbs	4,740 kg

STANDARDS COMPLIANCE	
	ANSI A92.5, CSA B354.4, EN 280, AS 1418.10

\* The metric equivalent of working height adds 2 m to platform height. U.S. adds 6 ft to platform height.  
 \*\* In lift mode (platform raised), the machine is designed to operate on firm, level surfaces only.  
 \*\*\* Gradeability applies to driving on slopes. See operator's manual for details regarding slope ratings.  
 \*\*\*\* Weight will vary depending on options and/or country standards.

## Features

### EASILY CONFIGURED TO MEET YOUR NEEDS

#### PLATFORM OPTIONS

- Steel 4 ft 8 in (1.42 m) (standard)
- Steel 3 ft 10 in (1.17 m)

#### JIB

- 4 ft (1.22 m) jib boom

#### ENGINE OPTIONS

- Kubota DF-972 3-cylinder gas/LPG 31 hp (23.1 kW)
- Kubota D-1105 3-cylinder diesel 26 hp (19.4 kW)
- Perkins 403 D11 3-cylinder diesel 26.4 hp (19.7 kW)

#### DRIVE OPTIONS

- 2WD
- 4WD

#### TIRE OPTIONS

- Industrial air-filled\*
- Rough terrain air-filled
- Industrial foam-filled\*
- Industrial non-marking air or foam-filled\*
- Rough terrain foam-filled
- High flotation air-filled (4WD only)
- Sealant treated air-filled

### STANDARD FEATURES

#### MEASUREMENTS

##### Z™-34/22 IC 2WD

- 40 ft 6 in (12.52 m) working height
- 22 ft 3 in (6.78 m) horizontal reach
- 14 ft 11 in (4.54 m) up and over clearance
- Up to 500 lb (227 kg) lift capacity

##### Z™-34/22 IC 4WD

- 40 ft 10 in (12.62 m) working height
- 22 ft 3 in (6.78 m) horizontal reach
- 15 ft (4.57 m) up and over clearance
- Up to 500 lb (227 kg) lift capacity

#### PRODUCTIVITY

- 4 ft (1.22 m) jib with 139° working range
- Self-leveling platform
- Hydraulic platform rotation
- Fully proportional controls
- Drive enable
- AC power cord to platform
- Horn
- Hour meter
- Tilt alarm
- Descent alarm
- 355° non-continuous turntable rotation
- Locking turntable covers
- Zero tailswing and front arm swing
- Two speed wheel motors

#### POWER

- 12 V DC auxiliary power



### OPTIONS & ACCESSORIES

#### PRODUCTIVITY OPTIONS

- Platform swing gate
- Half-mesh platform inserts with swing gate
- Air line to platform
- Fire resistant hydraulic oil
- Biodegradable hydraulic oil
- Hostile environment package
- Tool tray
- Fluorescent tube caddy
- Pipe cradle (pair)
- Alarm package
- Platform work lights
- Lockable platform control box cover

#### POWER OPTIONS

- Engine gauge package
- AC Generator Packages (110 V / 60 Hz - 220 V / 50 Hz, 2000 W)
- Cold Weather Package
- LPG tank 33.5 lb (15.19 kg) capacity

\* 2WD only

### Genie United States

18340 NE 76th Street  
P.O. Box 97030  
Redmond, Washington 98073-9730

Telephone **+1 (425) 881-1800**  
Toll Free in USA/Canada **+1 (800) 536-1800**  
Fax +1 (425) 883-3475

### Genie Europe

The Maltings  
Wharf Road  
Grantham NG31 6BH  
UK

Telephone **+44 (0)1476 584333**  
Fax +44 (0)1476 584334

Email: [AWP-InfoEurope@terex.com](mailto:AWP-InfoEurope@terex.com)

### Distributed By:

Effective Date: April, 2011. Product specifications and prices are subject to change without notice or obligation. The photographs and/or drawings in this document are for illustrative purposes only. Refer to the appropriate Operator's Manual for instructions on the proper use of this equipment. Failure to follow the appropriate Operator's Manual when using our equipment or to otherwise act irresponsibly may result in serious injury or death. The only warranty applicable to our equipment is the standard written warranty applicable to the particular product and sale and we make no other warranty, express or implied. Products and services listed may be trademarks, service marks or trade-names of Terex Corporation, Genie Industries, Inc. and/or their subsidiaries in the U.S.A. and many other countries and all rights are reserved. Terex is a Registered Trademark of Terex Corporation in the U.S.A. and many other countries. Genie is a Registered Trademark of Genie Industries, Inc. in the U.S.A. and many other countries. Genie is a Terex Brand. © 2011 Terex Corporation.